

### Leica Geosystems Geospatial Imaging Acquires IONIC

Leica Geosystems Geospatial Imaging has acquired all outstanding shares of IONIC Software, a geospatial software company headquartered in Liege, Belgium, as well as all the shares of the related American company IONIC Enterprise. Together, these companies are referred to as IONIC ([www.ionicsoft.com](http://www.ionicsoft.com)). IONIC provides state-of-the-art, enterprise geospatial technology with the most advanced service-oriented mapping available for web-based and distributed systems. IONIC's strength in the defense, space, government and commercial enterprise sectors complements Leica Geosystems' market presence and existing product portfolio.

[www.gi.leica-geosystems.com](http://www.gi.leica-geosystems.com)

### Autodesk Acquires Opticore AB

Autodesk has signed an agreement to acquire certain assets of Opticore, a wholly-owned subsidiary of Design Communication, based in Gothenburg, Sweden that provides software for interactive and realistic 3D visualizations and presentations. The acquisition underscores Autodesk's continued drive to deliver solutions that support best-in-class designers and manufacturers and enable them to implement a complete Digital Prototyping solution. Opticore is a premier graphics communication software provider delivering advanced technology used to produce believable, highly interactive and realistic 3D digital product visualizations and presentations. Opticore products leverage digital prototypes from computer-aided-design (CAD) and computer-aided-industrial-design (CAID) to reduce the need for physical prototypes, shorten development cycles and increase communication between designers, managers and customers.

[www.autodesk.com](http://www.autodesk.com)

### 1Spatial Announce Acquisitions in Ireland and Scotland

1Spatial announced the acquisition of Proteus Solutions Limited and IME UK Limited on the 6th July 2007 to form 1Spatial Ireland and 1Spatial Scotland. As part of the acquisition Seamus Gilroy, Managing Director of Proteus will become Managing Director of 1Spatial Ireland and Alan Douglas, Managing Director of IME will take on the role of Managing Director for 1Spatial Scotland. The three companies have successfully worked together over a number of years, particularly on the Property Registration Authority of Ireland. 1Spatial believes that the merging of expertise will ensure that as organisations look to make more use from their spatial databases, share data and build common frameworks and spatial data infrastructures (SDI), 1Spatial will possess the skills necessary to manage repurpose and distribute spatial data.

[www.1spatial.com](http://www.1spatial.com)

### ESRI Opens ESRI Eastern Africa

ESRI announces a new distributorship for its GIS software in Africa with the opening of ESRI Eastern Africa Ltd. (ESRI EA). This expansion is in response to the evolving needs of the GIS market in the region. ESRI EA will provide software sales, support, and service to users in Kenya, Burundi, Djibouti, Eritrea, Ethiopia, Rwanda, Tanzania, and Uganda. ESRI's installation base in the region has tripled over the last seven years, and many United Nations (UN) agencies and government ministries are large users of ESRI technology, which is the de facto standard for GIS in Eastern Africa. Natural resources management, sustainable development, demographics, education, and transportation are the established mar-

kets, with emerging opportunities in areas such as land record management, utilities, and health and human services. Oakar Services, Ltd. (OSL), the former ESRI distributor in the region, will now focus on GIS project and consulting services and remains a sales channel for software solutions that complement the ESRI core technology sold and supported by ESRI EA.

[www.esria.co.ke](http://www.esria.co.ke)

### Microsoft Enhances Virtual Earth Product in the UK with Data from Intermap

Microsoft and Intermap announced the launch of Microsoft's enhanced Virtual Earth 3-D viewing platform based on Intermap Technologies' highly accurate and up-to-date elevation data for all of Great Britain. Intermap is also creating similar maps for all of Western Europe and the continental United States. The resulting product delivers a more seamless and accurate 3-D experience for all Internet users visiting Microsoft's Live Search Maps for England, Scotland and Wales.

[www.intermap.com](http://www.intermap.com)

### 22nd ESRI European User Conference in Stockholm

The 22nd Annual ESRI European User Conference will be held in Stockholm, Sweden, September 26-28, 2007, and will be organized by ESRI S-GROUP Sverige AB, ESRI's distributor in Sweden. The setting of this event will be City Conference Centre, which is one of Scandinavia's largest conference and convention venues.

[www.esri.com](http://www.esri.com)

### Applanix POS LV Onboard 2007 DARPA Urban Challenge

Applanix' POS LV Position and Orientation technology will be onboard both the Carnegie Mellon Tartan Racing team's autonomous vehicles being prepared for this year's DARPA Urban Grand Challenge. The Applanix POS LV GPS-aided inertial navigation system proved to be a reliable and accurate vehicle guidance advantage during the 2005 DARPA Grand Challenge. The performance of the POS LV was critical in enabling Carnegie Mellon's robots to finish the 132 mile course among the top three, a historic first.

[www.applanix.com](http://www.applanix.com)

### Cadcorp Becomes both ISO 9001 and ISO 27001 Certification

Digital mapping and geographic information systems (GIS) software developer Cadcorp has become one of the first companies in the GIS industry to be awarded both ISO/IEC 27001:2005 and ISO 9001:2000 certification. ISO/IEC 27001:2005 certification relates to the management of information security within an organisation. It was awarded to Cadcorp on 27 April, 2007 by Lloyd's Register Quality Assurance and applies to the company's management of its IT infrastructure and data in support of all company activities at its London and Stevenage offices.

[www.cadcorp.com](http://www.cadcorp.com)

### DHV Joins Bentley Enterprise License Subscription

DHV, an international consultancy and engineering group providing services and sustainable solutions in the fields of transportation, water, building and manufacturing, and spatial planning and the environment, has joined Bentley's Enterprise License Subscription (ELS) program. The Bentley ELS program grants organizations unlimited access to the entire ELS software portfolio for a fixed annual fee. The portfolio covers all the architectural, engineering,

and construction (AEC) and geospatial software needs of subscribers, providing building, plant, civil, and geospatial solutions and supporting a managed environment for their AEC and geospatial IT.

[www.bentley.com](http://www.bentley.com)

### ESRI Middle East and North Africa User Conference

The Tenth Annual ESRI Middle East and North Africa User Conference will be held in Muscat, Sultanate of Oman, October 29-31, 2007, organized by Khatib & Alami, ESRI's local distributor. The conference will take place in the distinguished Barr Al Jissah Resort & Spa, exclusively located on the bay at Barr Al Jissah, nestled against the dramatic backdrop of the rugged interior mountains and spectacular waters of the Gulf of Oman. This conference is the premier event for ESRI GIS users in the region, who gather to meet fellow users and share in their experiences and challenges.

[www.esri.com](http://www.esri.com)

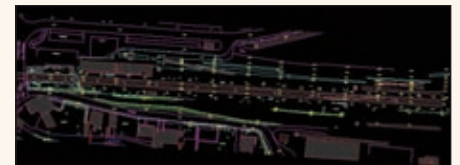
### Fugro Wins Airborne Survey Project in Nigeria

Fugro has been awarded a contract for an airborne geophysical survey over regions of the Federal Republic of Nigeria. The value of the contract is USD 23 million (EUR 16.9 million).

The Sustainable Management of Mineral Resources Project, acting on behalf of the Ministry of Mines and Steel Development of the Federal Republic of Nigeria, will supervise the project, which is assisted by the World Bank. Fugro is tasked to acquire and process approximately 1,000,000 line kilometres of fixed wing airborne magnetic and radiometric data over the Chad Basin, Central North region, Adamawa & Cross River region and Sokoto & Niger Basins of the Federal Republic of Nigeria.

[www.fugro.com](http://www.fugro.com)

### Geokosmos to Conduct LiDAR Survey of French Railways



Geokosmos has successfully completed LiDAR survey of French national railways in France. Using combined airborne laser scanning and digital aerial photography technology Geokosmos surveyed that part of the railroads which connects Amiens and Bouillon and covers an area of 83 km. The captured data was used for producing of a large-scale digital topographic map (scale 1:500) and a digital orthophoto (GSD 5 cm) that will definitely help French National Railways Service to provide technical assessment of the French railways and its infrastructure.

[www.geokosmos.ru](http://www.geokosmos.ru)

### Intermap Technologies and East View Cartographic Team Up

Intermap Technologies announced a new partnership with East View Cartographic (EVC), distributor of online geospatial products through EVC Store, to provide greater access to Intermap's 3D elevation

datasets and geometric images. EVC specializes in custom GIS data production using data from a variety of in-house or client sources and in helping clients find and manage the right mapping and GIS data production resources for their projects.

[www.cartographic.com](http://www.cartographic.com)

[www.intermap.com](http://www.intermap.com)

### Intermap Wins Mapping Contracts for Mapping in Southeast Asia

Intermap Technologies has been awarded four contracts valued at US \$2.2 million for radar mapping in Southeast Asia. Under the agreement, the company will collect and deliver three-dimensional digital elevation data and orthorectified radar imagery utilizing Intermap's IFSAR radar mapping technology. Data will be collected and delivered in 2007. Accurate and current digital elevation models (DEMs) in this region will allow the Company's clients to formulate strategies to assist in the decision-making needs to mitigate tsunami and geohazard effects in this island-rich region. Another client will utilize the data to assist in seismic planning and advanced energy exploration without disturbing the environment.

[www.intermap.com](http://www.intermap.com)

### Leica Geosystems Wins Ordnance Survey's Gold Partner Award 2007



Leica Geosystems won the prestigious Gold Partner Award at Ordnance Survey's biggest ever partner conference earlier this month. Furthermore, Leica Geosystems was nominated for an Innovation Award at Ordnance Survey's annual conference in London. With a membership of over 500 organisations from individual entrepreneurs to multinational companies over a wide range of markets, Ordnance Survey's Partner Programme is a world renowned commercial alliance programme. Leica Geosystems entered into partnership with Ordnance Survey in 2005 to offer Britain's first commercial RTK network, SmartNet. SmartNet offers an RTK and DGPS correction service that uses signals from Ordnance Survey's network of base stations, OS Net.

[www.leica-geosystems.co.uk](http://www.leica-geosystems.co.uk)

### Michael Hickey Named President of Pitney Bowes MapInfo

Pitney Bowes announced that Michael Hickey has been named president effective May 29, 2007. Hickey, who prior to the acquisition by Pitney Bowes, served as Chief Operating Officer at MapInfo for five years, brings more than 20 years of management experience to his new role.

Hickey replaces Mark Cattini who has been named president of Pitney Bowes Marketing Services.

[www.pb.com](http://www.pb.com)



### Ordnance Survey Brings a new Perspective to London



Ordnance Survey has become the first organisation to offer oblique imagery for the whole of London, offering a revolutionary new perspective of the capital. Over 3 000 km<sup>2</sup> of data covering all London boroughs is available for immediate supply. Data for all towns and cities across Great Britain with populations greater than 50 000 will be available by the end of 2007, with over 70% of data captured to date. Pictometry oblique imagery fits well with Ordnance Survey's core datasets. It complements the entire OS MasterMap intelligent data portfolio of Topography, Imagery, Address and Integrated Transport Network™ Layers and can be used in conjunction with Ordnance Survey's Points of Interest data.

[www.ordnancesurvey.co.uk/products/pictometry](http://www.ordnancesurvey.co.uk/products/pictometry)

### Spanish Cartographic Institute Signs Agreement with ISM

The Cartographic Institute of Catalonia, Spain, has entered into a VAR agreement with I.S.M. International Systemap to distribute PurVIEW, a stereoscopic visualization and mapping extension for ArcGIS. PurVIEW stereoscopic geodatabase-direct 3D feature digitizing is a powerful extension for ArcGIS, providing fast access and direct exploitation of digital imagery intrinsic in modern thematic applications, from earth sciences to site/facility management.

[www.icc.cat](http://www.icc.cat)

### Tele Atlas Announces Formation Of Tele Atlas Taiwan Co., Ltd.

Tele Atlas announced a joint venture with Systems and Technology Corporation (S&T) to form Tele Atlas Taiwan Co., Ltd., an independent entity focused on delivering a complete digital map of the territory for portable, Internet, in-car and wireless navigation systems and applications. Tele Atlas Taiwan also unveiled its first mobile mapping van in the Asia Pacific region in the heart of downtown Taipei. Formed in 1992, S&T is recognized for delivering automatic vehicle location systems that track mobile assets and producing high quality digital maps of Taiwan. The S&T map database includes 100 percent coverage of the area's street network, covering more than 100,000 kilometers and 95,000 points of interest (POIs).

[www.teleatlas.com](http://www.teleatlas.com)

### Topcon Purchases leading German Distributor IBS

Topcon Europe Positioning has signed a binding agreement to acquire one of the company's top construction distributors, IBS of Hamburg, Germany. The IBS company has been founded in 1978 by Hermann Ibs. Starting with construction laser sales, the company steadily grew to include the broad range of construction positioning products. Nowadays the 11 person company offers a full range of positioning and Machine Control solutions.

[www.topcon.eu](http://www.topcon.eu)

### Dutch Ministry of Agriculture Signs Enterprise License Agreement for GIS

The Netherlands Ministry of Agriculture is significantly expanding its GIS implementation with the recent signing of an enterprise license agreement with ESRI Nederland B.V. The ministry has used ESRI's GIS software for various agricultural programs such as managing rural areas and subsidy control programs for farmers since the late 1980s. This new agreement gives the ministry unlimited access to the complete platform of ESRI technology. ArcGIS Server will be used to exchange spatial data between regional offices and with people working in the field.

[www.esri.com](http://www.esri.com)

### GAF AG to Establish Mining Title Cadastre for Nigeria

GAF AG has been awarded a contract to set-up a new computerised and countrywide mining cadastre system for Nigeria. After the successful completion of contract negotiations GAF has started work on-site in June 2007. The project aims to improve governance in the mining sector, through the establishment of a transparent system to grant, manage and cancel permits. The efficient and reliable management of mining titles is considered as a backbone to increase investment and growth in the mining sector of Nigeria.

[www.gaf.de](http://www.gaf.de)

### Infoterra's Database of Offshore Oil Seeps now Covers Arctic frontier

Infoterra has completed the mapping of offshore oil slicks in the Arctic area covering more than 2 million km<sup>2</sup> - including the Chukchi Sea, Beaufort Sea, Mackenzie Delta, Hudson Strait, Greenland and Outer Rockall areas. These areas expand the existing Global Seeps database into another new frontier region. The Global Seeps database, covering over 60 million km<sup>2</sup> of offshore basins, has been constructed by interpreting radar satellite data and screening offshore basins worldwide to a water depth of c.3,000 meters. The database is made up of over 12,300 ERS satellite equivalent scenes.

[www.infoterra.co.uk](http://www.infoterra.co.uk)

### Norwegian Air Traffic Control Services Company Awards Contract to ESRI Affiliates

A consortium led by ESRI business partner CGx AERO in SYS of France and including ENAC (France) and Geodata (Norway) has been awarded an international tender launched by Avinor AS for its Procedures for Air Navigation, Design and Aeronautical (PANDA) charting system. Avinor is a state-owned limited company that is responsible for air traffic control services in Norway. The company owns and operates 46 airports throughout the country including 14 that are in association with the armed forces.

[www.esri.com](http://www.esri.com)

### Ordnance Survey's Annual Report Published

Ordnance Survey UK posted a surplus of £6.2 million (before interest and dividend) on an operating turnover of £115.5 million, and spending on investment was £21.5 million. The Report shows that Ordnance Survey exceeded all five financial and service quality targets set by government for 2006-07 and will pay a £4.6 million dividend to the Government. The results also mean that Ordnance Survey has met the target for achieving a return on capital employed, averaged over the three-year period 1 April 2004 to 31 March 2007, of at least 5.5%. Ordnance Survey Annual Report and Accounts can be viewed and downloaded at

[www.ordnancesurvey.co.uk/annualreport](http://www.ordnancesurvey.co.uk/annualreport)

[www.ordnancesurvey.co.uk](http://www.ordnancesurvey.co.uk)