

ESRI Releases GeoCollector Series



ESRI released the GeoCollector series, an end-to-end field data collection solution that merges ESRI's mobile GIS software with professional-grade global positioning system (GPS) technology from Trimble. The GeoCollector solution includes an ultrarugged handheld computer with integrated GPS receiver from the current Trimble GeoExplorer series and ESRI's ArcPad, delivering hassle-free field collection and data integration with ArcGIS. To meet the full range of field data collection requirements, the device is available in three accuracy options: subfoot, submeter, and

one- to three-meter. The GeoCollector series also includes Trimble's GPScorrect for ArcPad, which collects and manages the GPS data necessary for differential correction during data collection. In addition, Trimble's GPS Analyst for ArcGIS Desktop is available as an add-on to enable the direct transfer of data from GeoCollector and to perform differential correction inside ArcGIS Desktop.

Source: ESRI

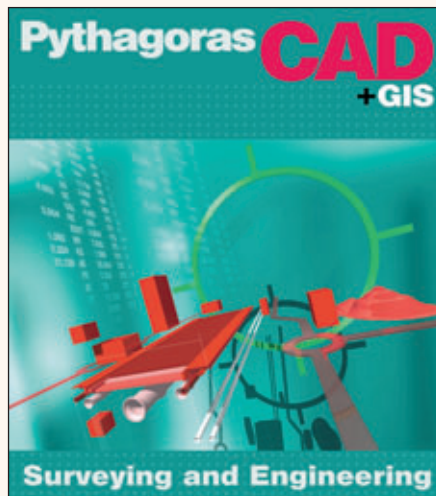
Internet: www.esri.com/geocollector

Leica SpiderWeb V2.0 with Additional Services

ADW Software launches Pythagoras CAD+GIS, a new version of its CAD software Pythagoras. The Road Design module has been redesigned completely and a new GIS module is added to the already existing CAD features. The new GIS module is completely integrated in the known CAD environment. According to ADW Software user defined line styles, symbols and hatchings allow displaying thematic maps in an easy way. Multiple thematic maps can be combined to ease up a visual analysis. Pythagoras CAD+GIS is equipped with multiple search engines combining expressions based on database attributes and graphical attributes of a drawing or project.

Source: ADW Software

Internet: www.pythagoras.net



Leica Geosystems Geospatial Imaging Releases ERDAS IMAGINE 9.1

Leica Geosystems Geospatial Imaging announces ERDAS IMAGINE 9.1 with expanded platform support such as Windows XP Professional Edition 64-bit and Sun Solaris 10. The IMAGINE NITF module has been enhanced addressing several key requirements for the Defense community. Leica Geosystems also provides support for the Indian Cartosat topographic mapping satellite demonstrating enhanced capabilities for Cartosat orthorectification. Additionally, ERDAS IMAGINE 9.1 continues to leverage the capabilities of spatially-aware databases such as ESRI ArcSDE and Oracle Spatial 10g. Additional new ERDAS IMAGINE 9.1 enhancements include:

- High-Pass Filter Resolution (HPF) Merge improvements;
- Faster and uses less temporary disk space;

- Better retention of original spectral radiometry;
- Control over output data type;
- Ehlers Fusion;
- Fourier Transform-based pan sharpening;
- Automatic or manual filtering schemas;
- TIFF format improvements;
- Support for GeoTIFF 1.5;
- Export TIFF Chip from TIFF ;
- New/upgraded TIFF Info tab in Image Info;
- Support for persistent NULL values;
- Extended project system support for Oracle Spatial 10g.

Source: Leica Geosystems Geospatial Imaging

Internet: www.gi.leica-geosystems.com

KOREC Releases New Versions of fastMAP Software

KOREC announced that Version 6 of fastMAP mapping products are now available:

fastMAP CE version 6.0

New features in version 6 of KOREC's GIS data capture and maintenance software include support for Pocket PC 2005; a simplified 'Tom Tom' style user interface; link to 'Trimble VRS Now' GPS correction service; improved GPS status information including predicted accuracy; simple area and line measurement functions and support for Bluetooth laser measurement devices.

fastMAP Tablet version 6.0

KOREC's single solution for collecting, maintaining and processing GIS data now offers user defined job attributes; enhanced surveying functions such as intersections, extend line and offsets; automatic recording of time stamped GPS log file and links to Trimble VRS GPS Rover for cm position accuracy and Trimble GPS Now for improved positional accuracy, < 0.3m.

fastMAP Office version 6.0

The upgrade of KOREC's desktop GIS provides an enhanced user interface; the ability to create/manage overlay groups; a user defined 'Quick Menu' for repetitive tasks and improved database forms.

Source: KOREC

Internet: www.korecgroup.com/mapping

DAT/EM Systems Summit Evolution 3.8

In preparation of a new LiDAR management product, DAT/EM's Summit Evolution V3.8 includes a few utilities that currently exist as stand-alone modules. These are installed with Summit Evolution and may be used to read points or create images from LiDAR data. Summit Evolution Version 3.8 is available for download from DAT/EM's website.

Source: DAT/EM

Internet: www.datem.com

3D Products for ESRI ArcGIS Explorer by Pictometry and Harris Corporation

Pictometry International Corp and Harris Corporation announced the availability of new 3D modeling products. This new offering combines the aerial imaging data from Pictometry with Harris' 3D modeling and geospatial product expertise. The products are available in a variety of formats accessible via ESRI's ArcGIS Explorer. Pictometry's industry software enables users to access up to 12 different oblique (at an angle) views of any property, building, highway, or other feature. The software also enables users to obtain measurements such as distance, height, elevation, and area directly from the oblique imagery. Additional ESRI solutions from Pictometry include an ArcGIS extension, ArcIMS integration, ArcSDE support, and coordinate pass-through capabilities.

Source: Pictometry

Internet: www.pictometry.com

New ArcGIS Extension Supports Local Update of Census Addresses Program for 2010

ESRI announced the development of a new ArcGIS extension to support local governments participating in the Local Update of Census Addresses (LUCA) program for the 2010 Census. The Census Bureau LUCA program will allow the Census Bureau to benefit from local knowledge to improve the accuracy and efficiency of the 2010 Census by providing digital data and a review and update tool to approximately 40,000 local governments. The LUCA program is also expected to be one of the key cost-saving programs of the 2010 Census. The extension will read Census Bureau-provided spatial data in shapefile format, provide a toolbox

of census-specific workflow tasks (incorporating business rules and data validation), and output a revised shapefile in the required census format. This extension will replicate the task and technical functionality of the census Master Address File/Topologically Integrated Geographic Encoding and Referencing (MAF/TIGER) Partnership Software (MTPS) in an ArcGIS environment. The extension development is a joint effort between ESRI and Citygate GIS LLC. The anticipated availability of the initial version of the extension is December 2006, coinciding with the availability of census-provided data and a census-developed review

and update tool. Advance notice letters to participate in the LUCA program are expected to be sent to local government entities early in 2007, with formal invitation letters sent in July 2007 and census-provided data and the review and update tool delivered in the August–October 2007 time frame. More information about the LUCA program and participation options is available on the Census Bureau Web site www.census.gov/geo/www/luca2010/luca.html.

Source: ESRI

Internet: www.esri.com and www.citygategis.com

.NET-Manageable GIS Developer Kernel for WinForms

TatukGIS announces the release of the .NET edition of its GIS Developer Kernel product supporting .NET manageable code for Windows Forms. The Developer Kernel .NET is available as a free trial version download from the TatukGIS web site, along with 45 DK.NET samples in C# and VB.NET code.

The TatukGIS Developer Kernel is a comprehensive GIS software development toolkit (SDK), supporting advanced GIS functionality such as geometric relations, topology, SQL database server map layers, database joining, advanced rendering properties, most GIS/CAD/image/grid data formats, most geo-

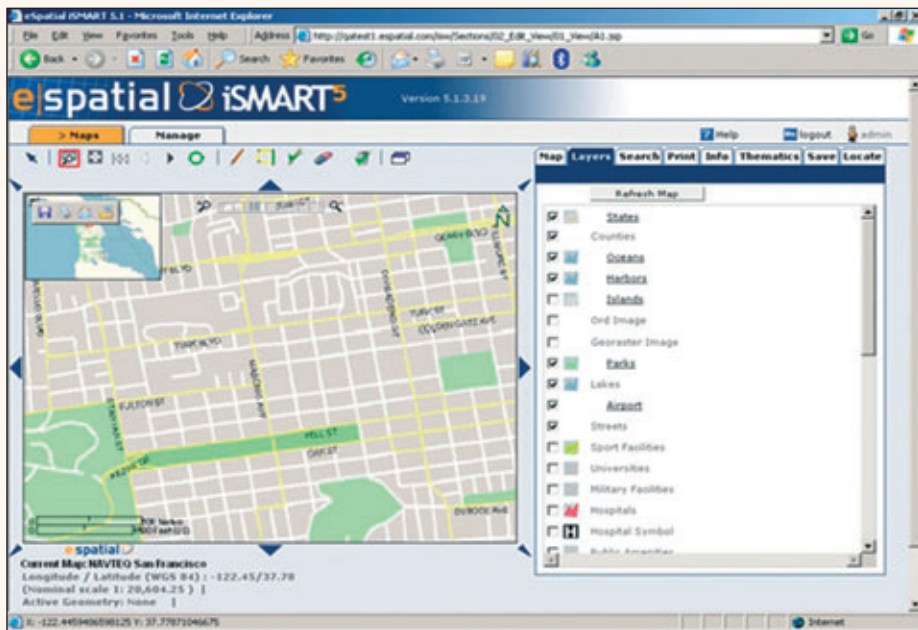
graphic coordinate systems, and much more. The native .NET edition is the third development platform edition of the TatukGIS Developer Kernel product, after the native VCL edition for Delphi and C++Builder developers and the ActiveX edition. The DK-VCL was originally released in 2001 and the DK-ActiveX was originally released in 2002. The VCL and ActiveX editions of the TatukGIS Developer Kernel product are used by GIS solution developers in over fifty countries. The .NET-native edition is released as a version 8.5 and supports the same object API, features, and properties as the latest

available versions of the VCL and ActiveX editions. The DK.NET v. 8.5 is based on .NET framework 1.1, but also compatible with .NET framework 2.0. The DK.NET product also reflects the same royalty-free licensing model as the DK-VCL and DK-ActiveX. Compiled, desktop applications developed from the Developer Kernel can be deployed to final users free of distribution royalties.

Source: TatukGIS

Internet: www.tatukgis.com

iSMART 5.1 by eSpatial



eSpatial announced iSMART 5.1, including advanced metadata management, further Oracle integration, increased use of Web 2.0 technologies and development environment to match emerging web mapping interface standards from companies such as Google and Microsoft. A key updated feature in iSMART 5.1 is the treatment of Metadata: iSMART 5.1 can configure, enter, view and search metadata; this capability enables iSMART users to find useful spatial data sets and add them into maps for viewing, editing, and analysing across an organisation or the internet. This is also an essential capability for Spatial Data Infrastructures (SDI) and complies with industry metadata standards such as ISO 19115 and ISO 15836 ('Dublin Core'). iSMART 5.1 provides deeper support for Oracle functionality, including integration with

Oracle 10g Mapviewer. This facility enables use of this Oracle application server component for visualising spatial data. It allows data rendered by Mapviewer to be combined with other data managed by iSMART such as from OGC web services, live / tracking data feeds, image stores, and custom data sources, for display, analysis and editing, and provides iSMART's 'out of the box' powerful end user tools for data management, visualisation (GeoPortal), and Editing to Oracle Mapviewer. It also increases the range of data types that may be viewed using iSMART tools and custom applications, including 10g GeoRaster GRID, and Network Data.

Source: eSpatial

Internet: www.espatial.com

Euro-Maps Now Available for Italy

In co-production GAF AG and Euromap GmbH have extended the availability of the IRS orthophoto mosaic 'Euro-Maps' from Germany, Austria and Switzerland to Italy. Euro-Maps is suitable for spatial planning and analysis of the current situations for a wide range of tasks. Euro-Maps is regularly updated and is a high-resolution satellite mosaic offering such precise and current information with 5-m ground resolution and blanket coverage for multiple countries. The required areas can be precisely defined and this prevents losses caused by scattering. Euro-Maps provides an up-to-date, accurate and economical planning spatial information base which can be continually updated and expanded. Euro-Maps offer simple and rapid access to detailed information about specific locations and their spatial relationships. This allows reliable decision making and rapid and efficient preparation of planning measures and cartographical tasks. Euro-Maps can already be created and delivered for other countries or regions anywhere in Europe, on request. Euro-Maps of the Iberian peninsula as well as large parts of northern Africa are just under construction and will be published beginning 2007.

Source: Euromap GmbH and GAF AG

Internet: www.euromap.de and www.gaf.de