

Differential Corrections via NTRIP and Direct IP with MobileMapper CE

MobileMapper CE, Thales' handheld GPS receiver for GIS applications, now offers differential corrections via NTRIP and direct IP. The new functionality will be available for delivery and via upgrade for current MobileMapper CE owners starting August, 2006. Thales will offer current owners of MobileMapper CE a free firmware update at the Thales FTP site. Thales MobileMapper CE offers real-time, sub-meter GPS positioning, embedded Microsoft Windows CE .NET, Bluetooth wireless technology, removable SD card memory and an all-day removable battery. MobileMapper CE Version is available as a stand-alone purchase, bundled with ArcPad, including ArcPad License, or bundled with ArcPad Application Builder including ArcPad Builder License. The MobileMapper CE GPS receiver offers a Windows computing environment, an 18-button backlit keyboard and touch-sensitive screen. The MobileMapper CE GPS receiver is designed to operate in harsh environments and built



to withstand a 4.9 foot (1.5 m) drop to concrete and remain waterproof even when totally immersed in water.

Source: Thales
Internet: www.thalesgroup.com/navigation

Nikon-Trimble Introduces Three Nikon Total Stations

Nikon-Trimble introduces the 602 Series of Nikon Total Stations, new high-precision mechanical total stations that include both a prism and prismless (reflectorless) model. The company also added a reflectorless model to the Nikon 502 Series. The new Nikon products are available through Tripod Data Systems (TDS) in the United States and Trimble internationally. The 602 Series adds functionality to the Nikon Total Station solutions. Both the DTM-652 and NPL-632 feature a CompactFlash (CF) slot and a USB port. The DTM-652 offers 1" angle and 2+2 ppm distance measurement capabilities. The NPL-632 features 2" accuracy and reflectorless operation with 3+2 ppm distance measurement accuracy. The NPL-522 adds prismless operation to the speed and precision of the DTM-522. It features 3" accuracy and reflectorless operation with 3+2 ppm distance measurement accuracy. As with all Nikon survey products, the DTM-652, NPL-632 and NPL-522 include Nikon's optics. According to Nikon-Trimble their all-weather construction and long-life batteries allow surveyors to work all day in any weather condition.



Source: Nikon-Trimble
Internet: www.nikon-trimble.com

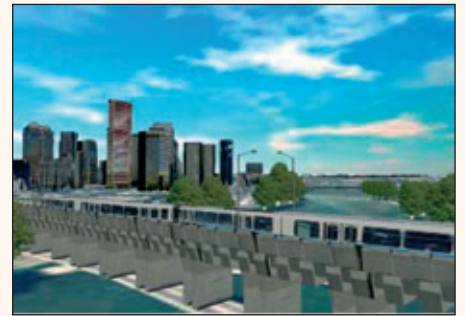
Leica Geosystems Launches Leica GPS900

The GPS900 RTK rover consists of a Leica RX900 Controller and a Leica ATX900 GPS Antenna. Leica Geosystems believes that with its type of onboard software the Leica GPS900 is an ideal solution for a wide range of jobs including foundation and drainage work, alignment stakeout, topographic and as-built surveys. The RTK reference and rover fit easily into a single rugged case. The GPS900 rover is lightweight and optimized to reduce operator fatigue. The icon-based, graphical onboard software can be easily operated using the VGA touchscreen. Import and export functionality allows the instrument to be compatible with Leica TPS400, Leica TPS800 and System 1200 TPS and GPS.



Source: Leica Geosystems
Internet: www.leica-geosystems.com

Leica Virtual Explorer 3.1



Leica Geosystems announces the availability of Leica Virtual Explorer 3.1. This version offers new tools for third-party integration and additional texture and navigation options.

Key new features include:

- Automatic placement of 3D models through the use of GIS vector layers;
- Tile texture and 3D roofs for more realistic vector presentation;
- When adding vector feature layers an attribute field can be used to define per-feature texture;
- Unicode support, allowing users to customize the default graphical user interface and scene content in their native language;
- ActiveX control enables Leica Virtual Explorer to be embedded into third-party applications;
- Available toolkit API, so that developers can create applications, tools or customized interface for Leica Virtual Explorer;
- Support for leading geospatial databases to enable users to directly access enterprise data;
- Enhanced navigation, including updated Spherical Navigation mode and roaming mode;
- North arrow;
- Server geocoding to provide thin clients geocoding services when connected to Leica Virtual Explorer Server;
- Percentage based lookup tables, allowing greater control over the visual output of the scene.

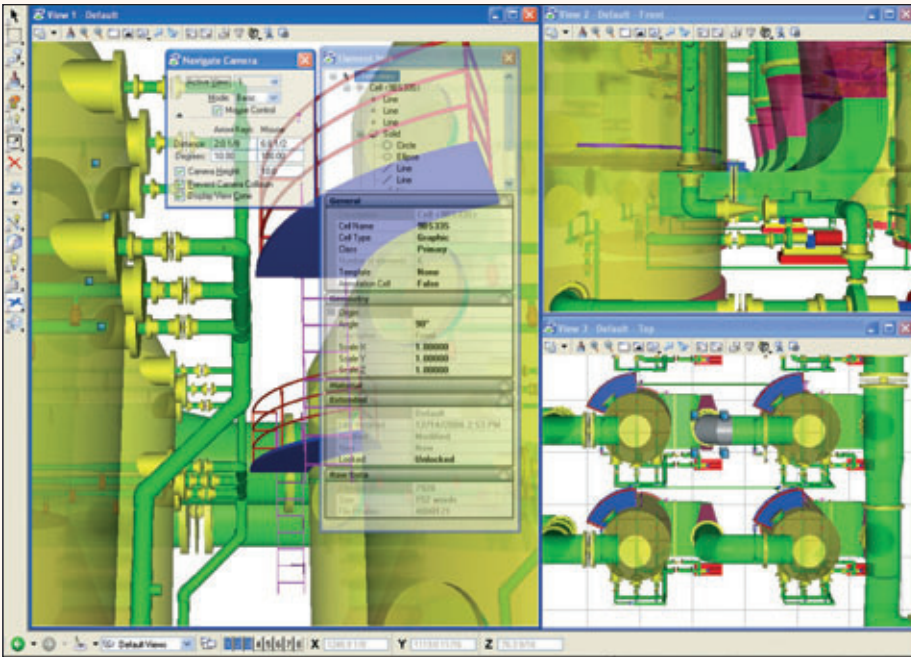
Source: Leica Geosystems
Internet: www.gi.leica-geosystems.com

Intergraph Releases Z/I Mission

Intergraph announces the availability of Z/I Mission, a comprehensive photo flight management system that provides a solution for aerial survey procedures. Z/I Mission provides a data environment that, according to Intergraph, can access any geo-referenced raster backdrop, vector mapping data, and digital orthophotos for flight planning. This mission planning system addresses functions such as flying a particular azimuth, planning the most economical mission for a given region of interest, and 3D mission planning. The Z/I Mission Core module facilitates basic functions such as viewing of projects, data import or export, definition of coordinate systems, display layout definition through legend manipulation, explorer functionality and catalogue handling.

Source: Intergraph
Internet: www.intergraph.com

Commercial Release MicroStation V8 XM Edition



Bentley Systems has launched the commercial version of MicroStation V8 XM Edition. An intuitive new interface, an unchanged DGN file format and full support for existing V8 standards are some of the features. Others are:

- Reference Enhancements: the ability to attach a PDF reference to a design file, dynamically manipulate reference clipping boundaries with handles, and attach multiple instances of the same model at different stages of development using Design History;
- Element Templates: integrate CAD standards with MicroStation Tasks to align features and tools with design and production workflows, so that teams can create consistent work;
- ProjectWise StartPoint: built-in technology providing an entry-level collaboration tool to manage, find, and share CAD and geospatial content using Microsoft Office SharePoint technologies;
- Link Sets: for managing and navigating relationships of content within files such as drawings and specification documents and across formats including DGN, DWG, PDF, and Office formats;
- Keyboard Position Assignments: patented keyboard position assignment to provide immediate access to

any MicroStation command at the stroke of a key, and programmable mouse functionality to increase the performance of view and model navigation;

- 3D Modeling Advancements: creation of parametric 3D geometry, mesh modeling for creating lightweight structures, and new handles for intuitive and interactive editing;
- Visualization and Animation: improved visualization capabilities for photo-realistic rendering and new animation tools;
- Microsoft Designed for XP Logo Compliance: new installers now ease the process of implementation and SELECT updates are structured to reduce the overhead of administration.

MicroStation V8 XM Edition is now available to all Bentley SELECT subscribers for immediate download from SELECT Services Online.

Source: Bentley Systems
Internet: www.bentley.com/microstation

ESRI GIS Portal Toolkit 3

ESRI announces the availability of a new version of the GIS Portal Toolkit. This includes improved installation and configuration, better metadata management and access control, and integration with ArcGIS Desktop. The GIS Portal Toolkit is a technology and services solution for implementing local, regional, national, and global spatial data infrastructure portals. GIS portals organize content (using metadata) and services such as directories, search tools, community information, support resources, data, and applications. Metadata records can be queried for relevant data and services and can link directly to online sites that host content services. The content can be visualized as maps and used in geographic queries and analyses. GIS portals are also designed for interoperability and comply with finalized OGC specification standards.

Source: ESRI
Internet: www.esri.com/software/arcgis/gisportal-toolkit/index.html or www.esri.com/gisportal

ALS50-II LIDAR System Leica Geosystems

Leica Geosystems' ALS50-II Airborne Laser Scanner allows data capture at pulse rates up to 150kHz. With the Leica ALS50-II, users can enjoy tight planimetric spacing while achieving accuracy of 11cm (including GPS errors) at all pulse rates. Leica ALS50-II is the second generation of the Leica ALS50 and features:

- Expanded flying height envelope (200m – 6000 m AGL) and faster scan rates to 90 Hz;
- Simplified operation with all functions now controlled via advanced graphical user interface, and no need for discrete laser attenuators;
- Incorporation of Leica Geosystems' new IPAS GPS / inertial measurement engine;
- Redesigned Control Electronics for a 54% reduction in volume and 33 kg reduction in weight.

Source: Leica Geosystems
Internet: www.leica-geosystems.com

Fastrax Announces iTrax Multiplatform Family

Fastrax launches the iTrax Multiplatform family of OEM GPS receivers. The iTrax Multiplatform approach provides a common form factor between multiple OEM GPS receiver models with different chipsets. The iTrax Multiplatform family includes the iTrax300, iTrax130 and iTrax03-S receivers, powered by SiRFstar III, Sony CXD2985 and u-Nav uN2110 chipsets, respectively. The increased range of choices allows consumer electronics manufacturers and OEMs to select the optimum receiver for each application, product and market segment. Key features of the iTrax Multiplatform product family:

- Includes Fastrax iTrax300, iTrax130 and iTrax03-S receivers;
- Tiny form factor: 16.2 mm x 18.8 mm x 2.3 mm;
- High sensitivity down to -157 dBm;
- Low power consumption down to 34 mA;
- Common connectivity;
- NMEA and binary protocols;
- Two serial ports;
- 1PPS output;
- GPIO available for custom purposes;
- Other peripherals include SPI bus, MMC bus, Capture Timer input, Pulse Measurement input, A/D converter depending on the module.

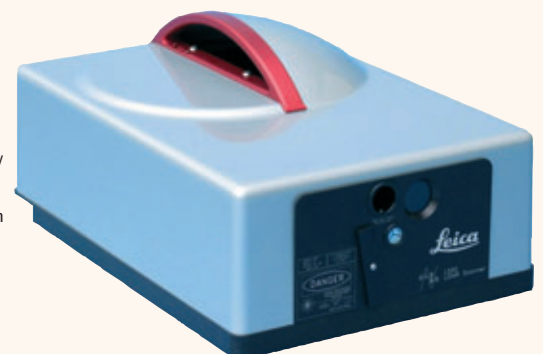
Source: Fastrax
Internet: www.fastrax.fi

Commercial Versions Open Source Web Map Publishing Software Autodesk

Autodesk announces the commercial version of its open source web mapping platform, Autodesk MapGuide Enterprise 2007. This certified version features all of the benefits of the open source version, plus additional quality assurance, technical support, connectivity to additional data sources including Oracle and SQL Server, as well as integration of several third-party components. Also available is Autodesk MapGuide Studio 2007, an authoring environment for creating and publishing maps and related data with the open source or commercial versions of MapGuide. Specific customer benefits of an Autodesk MapGuide Enterprise subscription include the ability to:

- Contact web support with unlimited incidents;
- Connect to Oracle and SQL Server databases;
- Integrate third-party components such as the Mentor co-ordinate system;
- Access continual enhancements from Autodesk through regular updates that provide additional features and new hardware support.

Source: Autodesk
Internet: www.autodesk.com



Leica IPAS10 Available

Leica IPAS10 is the new Inertial Position & Attitude System from Leica Geosystems. It works with both Leica ADS40 digital imaging and Leica ALS50 airborne LIDAR sensors as well as being available as a standalone system for use with a wide range of sensors. It readily adapts to various Inertial Measurement Unit (IMU) types. According to Leica Geosystems the system eliminates the need for aerial triangulation on a wide range of mapping projects, reduces the need for ground control and facilitates quality control of acquired sensor data. Leica IPAS10 is capable of direct georeferencing of airborne sensor data and the providing of various data such as calculated position, velocity, roll, pitch and heading at high rates and accuracies. The Leica

IPAS10 System consists of three components:

- The control unit with embedded GPS board for high dynamic airborne applications and a universal plug-and-play interface for various IMU types;
- The Controller Software as the operator's graphical user interface – interactive and Windows-based software with all main operation information contained in a single window;
- The IPAS Pro software which blends IMU data with GPS trajectory information to provide post-mission position and orientation data solutions.

Source: *Leica Geosystems*

Internet: www.gi.leica-geosystems.com

Leica MNS1200 GNSS Solution

With the new Leica MNS1200 GNSS solution, Leica Geosystems presents a machine navigation system specifically designed for construction and mining machine operation at toughest conditions and supporting full GNSS signals (L2C and GLONASS). Leica MNS1200 GNSS consists of three robust components: the MNS1200(GG) receiver, the MNA1202GG antenna and the radio modem. Supporting GPS and GLONASS satellites thanks to a new Measurement Engine supporting ultra-precise GNSS signals with 72 channel, this solution optimises working around trees, in canyons, mines and sites with overhead obstructions. It is also equipped to support future GNSS signals such as Galileo or GPS L5.

Source: *Leica Geosystems*

Internet: www.gi.leica-geosystems.com



BAE SYSTEMS Releases SOCET SET Version 5.3

BAE Systems released the latest version of its geospatial analysis and photogrammetry software. The new software, SOCET SET v5.3, includes automated features that are meant to reduce errors, increase accuracy, and streamline workflow processes— all integral to daily workflows and with

built-in quality checkpoints. In addition, SOCET SET v5.3 offers sophisticated sensor models to import and process imagery.

Source: *BAE Systems*

Internet: www.baesystems.com/gxp

FME 2006 GB by Safe Software

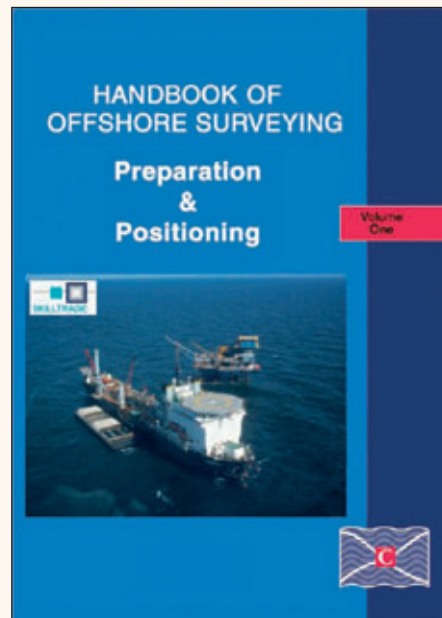
Safe Software released FME 2006 GB, the latest version of the company's Feature Manipulation Engine technology. New security options in FME 2006 GB allow users to password protect workspaces, custom formats, custom transformers and mapping files. Authoring workflows and debugging has also been made easier with the inclusion of optional counters in the Workbench canvas. These show the number of features passing through each link between transformers and feature types. Users running FME 2006 GB on selected 32-bit versions of the Microsoft Windows operating system can now process large datasets by setting the /3GB switch via a simple edit to a system file. The /3GB switch "borrows" one gigabyte of memory from kernel processes and makes it available to the application,

for a total of 3 gigabytes of application addressable memory. When run on 64-bit versions of Windows, FME 2006 GB automatically has 4GB of user application addressable memory available. MRFCleaner, a new transformer which is useful for repairing the geometry of data, is available as an extra-cost item for FME 2006 GB. New format support in FME 2006 GB includes a TOP10NL writer, an Additional Military Layers (AML) reader, support for the Open Geospatial Consortium's GML Simple Features Profile, and optimized access to Microsoft ExcelT, SQL ServerT, and AccessT databases through Microsoft ActiveX Data Objects.

Source: *Safe Software*

Internet: www.safe.com/2006GB

Handbook of Offshore Surveying



On May 30th Skilltrade presented the 'Handbook of Offshore Surveying' to a number of contributing editors. The Handbook of Offshore Surveying was written by Skilltrade BV and published by Clarkson Research Services Ltd. It is largely based upon Skilltrade course material and focuses on developing hands-on practical skills. During the presentation, Skilltrade B.V. and STC B.V. (Industrial Training and Consultancy division of the STC-Group / Shipping and Transport College of Rotterdam, the Netherlands) announced their intention to establish an IHO-FIG accredited course in Hydrographic Surveying at the B level. The first course will be available in 2007. Similar to the handbook, the course will be geared towards teaching practical skills rather than theory, except where theory is needed for a proper understanding of the knowledge required to perform.

Source: *Skilltrade*

Internet: www.skilltrade.nl, www.csrl.com or www.stc-group.nl

Launch Géoportail

Géoportail was launched on 23rd June by French president Jacques Chirac at the Elysées Palace, Paris, France. The service has been developed by Institut Géographique National (IGN), France's National Geographic Institute, and makes the whole of France available at 50cm resolution. Currently only 2D navigation is possible with plans in 2007 for 3D capabilities. The first version has been developed by Teamlog, a French computer services company, and Digitek., at a cost of around 6 million euros. Géoportail contains 3,700 topographical maps and 400,000 aerial photographs with a 50 cm resolution. Eventually IGN will aim at integrating other data so that the site will become a portal for a very diverse group of users.

Source: *IGN*

Internet: www.geoportail.fr